

MaxiTrack

Equipment & Installation Guide



MAXITRACK COMPONENTS



MaxiTrack Mat



Long Bolt



Short Bolt



Mat Insert

TOOLS REQUIRED



17mm Socket
And Extension



Impact
Drill



5mm Allen
Key



Gloves

INSTALLATION INSTRUCTIONS - Unloading & Laying

Unloading & Laying

- It's recommended that two people unload and carry the mat to it's lay down location.
- Lay them down with the stepped down edge away from you and building out right to left.



INSTALLATION INSTRUCTIONS - Aligning Mats

Aligning Mats

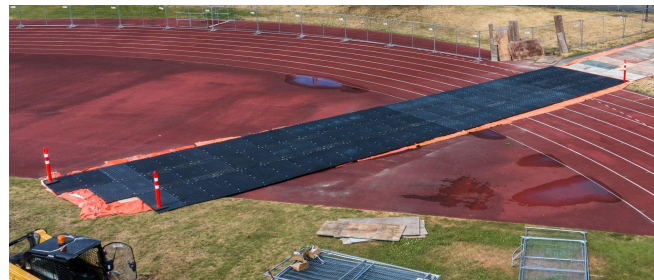
- Mats can be laid horizontally or vertically, depending on the direction of your traffic flow.
- Make sure the connecting points align before bolting.
- ALWAYS bolt mats together as you go.



INSTALLATION INSTRUCTIONS - Short Vs Long Bolts

When to Use Short Bolts

- Use short bolts when mats are used as ground protection where the mats need to be flush with the protected flat surface.



When to Use Long Bolts

- Use long bolts when there's a slight gap, like when connecting mats at an angle or over uneven terrain.



INSTALLATION INSTRUCTIONS - Starting A bolt

Starting A Bolt

- **ALWAYS START EACH BOLT BY HAND** to avoid cross-threading.
- Start by aligning the bolt with the insert threads, then turn the bolt clockwise with a hand tightening tool until it's snug.
- Avoid standing on the mat while bolting it—this allows the mat to move freely and align properly with the bolt.



INSTALLATION INSTRUCTIONS - Securing A Bolt

Securing A Bolt

- Once the bolt has been properly threaded, it can be secured with an impact drill.
- Stop once the mats have pulled together—going further won't make it more secure and may damage the bolt or mat - do not overtighten, only light impacting needed.



REMOVAL INSTRUCTIONS

Removal Instructions

- Start by removing all connecting bolts using an impact drill.
- As you go, collect the bolts and store them in their designated storage location.
- Once unbolted, remove the mats by reversing the installation process—working from left to right.



INSPECTIONS

Inspections

- Before and after use, inspect the mats and hardware for any signs of damage due to misuse or negligence.
- As you disassemble, document any damage and set aside any compromised mats or hardware.



STORAGE

Storage

- It's recommended that the mats are stored in the MaxiTrack Storage & Transport Racks
- Each rack can hold up to 30 mats, though they are typically stored with 25. Racks are forkliftable and can be stacked up to three high.



TRANSPORT

Transport

- Stack the mats evenly on a truck or trailer, ensuring they are properly interlocked before securing them with straps.
- It's highly recommended to use corner protectors, especially on a big load.
- Racks can be used for ease of transport, but the mats must be secured through the mats themselves in addition to the rack.



TROUBLESHOOTING - Diagnosing a Stripped Bolt

Bolt Spinning In Place

- If a bolt spins without tightening or won't thread in or out, it may be stripped. Remove it and inspect the threads—replace if damaged.
- If the bolt threads appear intact, the issue may be a stripped mat insert.
- Note: This only occurs when bolts are over tightened or not hand-threaded before drilling.



TROUBLESHOOTING - Diagnosing a Stripped Mat Insert

Stripped Mat Insert

- If the insert spins within the mat, it's likely loose and should be tightened.
- If the bolt won't thread and you've confirmed it isn't stripped, the insert itself may be damaged and should be inspected or replaced.
- Use a 5mm Allen key to remove the insert, then inspect it carefully and replace if necessary.



For questions and inquiries about uses and applications, please contact Pinecone Equipment at 778-819-8498 or at info@pineconeequipment.com

